

Established 1969

News

2011 – Edition 8

3 Alice Street,
Bassendean (PERTH)
Western Australia 6054
Ph: +61 8 9279 5522
Fax: +61 9 9279 9386
www.hofmannengineering.com
mail@hofmannengineering.com

Manufacturing and refurbishing precision equipment

HOFMANN SOUTH AMERICA

Hofmann Engineering establishes new subsidiary in South America

Following more than ten years as a significant exporter of product improved mining parts to the region, Perth-based Hofmann Engineering Pty Ltd has now established a new subsidiary in South America named, **Hofmann Engineering Sudamérica Limitada**. The new company will initially consist of a service & overhaul facility and sales office located at Antofagasta in Region II (northern) of Chile. The region is ideally situated to service the mining industry throughout South America. Customer demand for product improved parts, greater technology and localised product support in the region, resulted in the decision to invest

in the construction of a world class high quality service and overhaul facility which is anticipated to be completed in 12 months following local government approvals. Meanwhile machining equipment is being shipped from Australia to open an initial transmission overhaul and rebuild facility as soon as possible.

For technical service and support in this region please contact our newly appointed Technical Services Engineer, Aldo M. Tapia aldo.tapia@hofmannengineering.com

By Tim Mitchell & Steve Hall

HOFMANN NORTH AMERICA

Hofmann Engineering North America Ltd established from 01-July 2011

Hofmann Engineering, is pleased to announce the establishment of **Hofmann Engineering North America** and to confirm that it has secured a controlling interest in CGC Gearing Limited of 330 Pinebush Road, Cambridge, Ontario, Canada. The 5 acre Canadian facility will become the cornerstone of Hofmann Engineering North America. Managing Director, Erich J Hofmann said; "Our company will be able to achieve substantial manufacturing synergies with our three existing facilities in Australia, as well as to offer enhanced levels of gearing service and gearbox overhaul capabilities to existing Hofmann customers in the North American region".

The new North American subsidiary will immediately switch over to the use of existing Hofmann **QA** Systems (which are accredited to ISO9001 and AS9100) as well as fully implementing the existing Syteline **ERP** software. The business plan for Hofmann Engineering North America includes the sale and manufacture of the complete range of Hofmann Engineering products; specifically;

- Service North American customers with a full range of improved replacement parts for mining shovels, draglines, plus all fixed and mobile plants.
- Manufacture and refurbish Gearboxes for mining equipment and wind turbines.
- Local manufacture of forged steel and cast nodular iron gearing to 8-metres outside diameter for grinding mills, stacker-reclaimers and other applications.
- Local manufacture of high precision case-carburised Pinions using the Höfler Rapid-2000 form grinder recently installed at CGC Limited.

Mr Cosmin Carpinisan, President of Hofmann Engineering North America Ltd. said "As a local company we will

benefit through integration into the larger, more global Hofmann Engineering business as well as through having direct access to Hofmann's wider range of engineering capabilities - including their unique capacity in large-diameter forged steel gearing, wind & tidal power gearbox technologies, trackshoe assemblies for large mining shovels, and other key enabling technologies".

By Cosmin Carpinisan

Bendigo Gearbox Refurbishment Facility

Hofmann Engineering Bendigo now has a fully operational Gearbox Refurbishment facility. The Bendigo facility is handling and refurbishing gearboxes from a range of industries and applications including Mining, Minerals, Defence, Steel Mills, Power Generation and Wind Turbines and are quickly establishing professional relationships with many large companies across Victoria, New South Wales and Queensland.

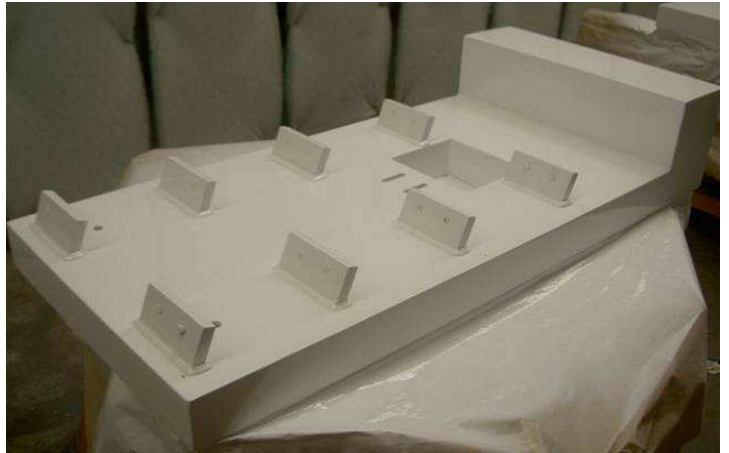
The Bendigo facility are able to work on all brands of gearboxes, from small to very large and offer a current capacity of up to 40T. Hofmann Bendigo is providing engineering support services to customers with Planetary, Bevel, Helical, Worm drive and Cyclo gearboxes and offers a complete strip and assess service with detailed reporting and quotation for repair.

Hofmann Bendigo has also commenced condition monitoring (vibration analysis, laser alignment and detailed reporting) of wind turbine gearboxes in Victoria which will ultimately lead to wind turbine gearbox refurbishment opportunities with the work being done here in Victoria. The large scope of work this facility is currently servicing has driven the approval to join Buildings 31 and 27 at Bendigo. This renovation will make the Bendigo Gearbox Refurbishment operation the largest in the Southern Hemisphere including gearbox load test facilities.

By Geoff Kinniburgh



Metaltec - Foodpack yoghurt cutting tools & TNA weldments



Here is a quick update of the Yoghurt cutting tools refurbishment area and Fabrication in Foodpack at Hofmann Engineering Melbourne. We are currently trying to break into the yoghurt manufacturing businesses in South East Asia using our agents over there and are making some slow but positive progress. We also have managed to break into Danone here in Victoria who has gone into a joint venture processing yoghurt with Murray Goulburn Cooperative at Kiewa in northern Victoria. Danone, a French yoghurt processing company is a new competitor here in Australia to National Foods and Fonterra whose cutting tools are currently refurbished at Hofmann Metaltec.

Hofmann Engineering have also delved into an exciting new market place in the foodpack industry. TNA manufacture vibratory conveyer system used in companies like Pepsi, Coca Cola and other large food and Beverage processors all over the world. We have managed to complete our first batch of TNA base weldments and have finally seen some good quality results. The results were achieved by refining the manufacturing processes which has proven to be a success and we look forward to building this aspect of the business in the future. Thanks to all staff involved in Perth, Bendigo and Melbourne.

By David Thickpenny

Haulpak History

On a recent visit to the Pilbara, Erich J Hofmann was taking some photos of an old museum piece, a Wabco Haulpak, model 3200A - 220 tonne dump truck. As he looked closer he noticed that emblazoned in a casting for all to see, were the letters "J&EH". Mt Newman Mining Company just wanted their trucks running and went to great lengths to try to achieve this. If the manufacturer couldn't supply the parts they needed then they would just find someone who could. In the seventies and eighties, original equipment suppliers often didn't have the capacity to react quickly to their customer parts needs and were reluctant to upgrade or improve some of their products. Companies like J & E Hofmann Engineering were ready to help. In the case of the Haulpak 3200, Hofmann redesigned the planetary gear carriers to improve reliability. As it turned out, Hofmann's provided a number of parts to keep that fleet running for all those years. *By David Fry*



QAL Manual Handling & Ergonomics Expo

QUEENSLAND ALUMINA LIMITED

This Manual handling and ergonomics Expo was organised by QAL (Gladstone) and held at their Bob Druitt training centre, Car park and surrounding area.

Many local and east coast refineries who visited the expo were able to view the latest technology for manual handling products from about 24 vendors.

Hofmann's Open and Close devices for isolation and drain valves exhibit was very popular and drew much interest from many who visited. Today engineers are working towards creating a safer environment for operators and after seeing these devices, upgrades to their current manual handling valves should be on their 'to-do' list.

The Spectacle and Remote control Valve drew much interest by engineers from Gove, Yarwun and QAL refineries. We were privileged and pleased to hear from operators, maintenance and supervisors about their issues with operating valves and how our equipment has addressed most of these issues. Many interesting points were raised by all refineries around grinding difficulties with their present valves and also comment was made about how our

valves have simplified this operating feature, they were impressed. Hofmann's Portable Line Boring Machine was demonstrated by Erich J and attracted onlookers and users of this equipment.

Hofnuts and other loose items were also on display. Many Vendors had opportunities to present their companies at the training centre; the managing director presented Hofmann Engineering to a packed audience in the conference centre. *By Rudy Keswick*



MINISTER CARR VISITS

The Honourable Kim Carr – Minister for Innovation, Industry, Science and Research visited Hofmann Engineering's Bassendean WA facility on the 8th of June and the following projects were highlighted. Hofmann Engineering has overhauled and re-designed some fifty (50) Wind Turbine gearboxes up to 1,000kW each for both local and export markets. The workshop includes a full load back-to-back Test Bed which evaluates wind turbine gearboxes under full load for both noise and vibration compliance; this is a unique facility in the Southern Hemisphere and is rated up to 2,000kW. An innovative 1,000kW Hofmann-designed Gearbox for a new Tidal Power project in Europe has recently been manufactured at Hofmann Engineering. Manufacturing is also well advanced on three units of what will become the world's largest stainless steel clad (lined) Grinding Mills for a large mining project in South America. The complexity of this project has required the development of new manufacturing methods, tooling and fixtures. Each mill shell is 9.15m inside diameter and weighs approximately 135-tonnes.

The investment in an integrated one-stop-shop for heavy equipment for the Energy, Mining and Oil & Gas industries has meant that Hofmann Engineering now has world-leading capabilities in key technologies such as Design & Finite Element Analysis Heat Treatment, Gear Cutting & Grinding, Heavy plate bending & fabrication, Metallurgical services and product Testing.

Background Information

During its 42 year history Hofmann Engineering has grown to employ 540 at its three sites around Australia, and now generates over \$110M per year of product sales, of-which 44% is exported to major markets of the world. The business now comprises one major factory at Bassendean WA, combined with two facilities located in Victoria, which provide unique services to the wave, wind and solar energy sectors as well as to many other industries.

By Steve Hall



Syama (Mali) Mill Shutdown

In March and April of 2011, eleven of Hofmann Engineering's site crew travelled to the Syama gold mine, located in Mali, West Africa. Whilst at site, the crew conducted a full white metal slipper bearing pad change out on the primary mill, scraping the new pads to match the trunnion surface followed by a complete changeover of the sealing arrangement from felt to nitrile. A complete Magnetic Particle Inspection of all three gears and pinions was carried out, with any pitting found being removed with a die grinder and carbide burr. Removal of any pitting and defects found will extend the service life of the gear by arresting any crack propagation prior to it becoming serious enough to affect the integrity of the gear tooth.

Earlier in March, three Hofmann personnel also attended site to change out the main drive gearbox due to a coupling

failure. Following the completion of all critical tasks of the April shut, the gearbox was stripped, the bearings inspected and subsequently changed out.

Once all tasks were completed the Hofmann crew departed site, and some even partook in a short trip to the Eiffel Tower during the stop-over in Paris on the return leg of the trip, a welcome break after two weeks straight on site.

By Warren Aird



Convertor Gear for Chile

The illustrated 5.9-metre diameter steel girth gear for an impressive Copper Converter was shipped from the Bas-sendeau works of Hofmann Engineering during March 2011. Through our direct customer the Vapor Industrial Group this large girth gear was fitted to the converter vessel at Rancagua Chile and then transported as a complete unit to a Smelter belonging to Codelco, the national copper corporation of Chile. Personnel involved in this challenging project included mill gearing manager Holger Fritz, gear shop personnel Russell Gould and Jammu Torvi, as well as many other staff members. During the past eight years Hofmann Engineering has supplied thirty five (35) large-diameter girth gears to the South American region, the majority going to Chile and Perú.

By Holger Fritz



Disaster Relief Appeals

Thanks to all who donated to the QLD Disaster relief appeal and the Jai Lazaro appeal. Jai's family home was lost in the Kelmscott fires. Hofmann Engineering matched the total raised by staff on both occasions.

Hofmann Bendigo Supplies Stainless Steel Mill Shells for Export

From its new Bendigo, Victoria heavy engineering facility Hofmann Engineering has recently completed delivery of two grinding mill shells for eventual installation in the Democratic Republic of Congo. Both mill shells were manufactured from duplex stainless steel, consisting of a 60-tonne 2-part SAG mill shell of 5.2m diameter by 6.1m long and a 1-part 30-tonne Ball mill shell of 3.8m diameter by 6.3m long. Personnel involved in this impressive on-time delivery included Works Manager Sam White, Mill Shells Manager Mitchell Kooiman, Snr Project Manager Adrian Fooks and Project Manager Jason Davies. A big thankyou

to the team from Perth who worked on the project during the Christmas shut down. The photograph below shows staff members at Bendigo who were involved with these vessels throughout the rolling, fabrication, machining, packaging & despatch processes. Hofmann facilities in Perth and Bendigo now include large Vertical Borers of 7.0m, 8.7m, 9.2m and 16m diameters suitable for machining the largest 40-Ft and 42-Ft diameter SAG mills. Grinding mill shells can be manufactured in carbon steel, stainless steel or bimetallic materials; mill heads can be machined from heavy fabricated steel plate or from SG iron castings. *By Sam White*

Congratulations

Congratulations to all staff who have reached milestone anniversaries with Hofmann Engineering, especially to:

30 years: Mike Tymus.

25 years: Ziggy Swalski, Bruno Butkevicius and Tim Robson,

20 years: Adam Kilijanski, Ian Martin, Paul Middleton and Peter Crawford, Marcello Springhetti.

15 years: Bryn Tozer, Leigh Sizer, Michael Laker, Raymond Larty, Brian Pelham, Ross Holloway and Sylvia Blackburn.

10 years: Guy Jarrett, Paul Waters, Jason Morris, Walter Kramer, Jeremy Reuben and Warren Bond.



EXPONOR—CHILE

For the first time Hofmann Engineering has participated in the major Exponor tradeshow held in Antofagasta Chile on 13-17 June 2011. The Exponor event is focused on the large and rapidly-growing copper industry in northern Chile and coincides with the recent launch of Hofmann Engineering Sudamérica. Some 830 exhibitors were present, including approximately 40 from Australia, and the President of the Exponor Board of Directors is Charlie Sartain of Xstrata Copper. During the five-day show Hofmann staff received approximately 300 formal visitors to the booth and a high level of interest in many product areas. One-on-one meetings were held with four major mining groups and purchase orders for Mill Gearing and for Shovel Transmissions have been received. Two staff from the Hofmann Engineering agent in Brazil (Miquelanti Ltda) were also present for training and coordination. The photograph shows Australian Ambassador to Chile Ms Virginia Greville (centre) with company staff Tim Mitchell, Aldo Tapia, Adriana Mitchell and Alyce Hofmann. *By Steve Hall*

