

**HOFMANN
ENGINEERING**

**CRUSHER
REPAIRS
AND
SERVICES**

**OVERHAULS
REPAIRS
SITE SERVICING
SITE INSPECTION
REPLACEMENT PARTS**

Since 1969 Hofmann Engineering has provided specialist engineering services to Australia's industry leaders.

Quality Assurance accreditation by Bureau Veritas complements our total quality culture.

Our commitment to continuous quality improvement touches every aspect of our products, services and customer support.

HOFMANN ENGINEERING PTY LTD

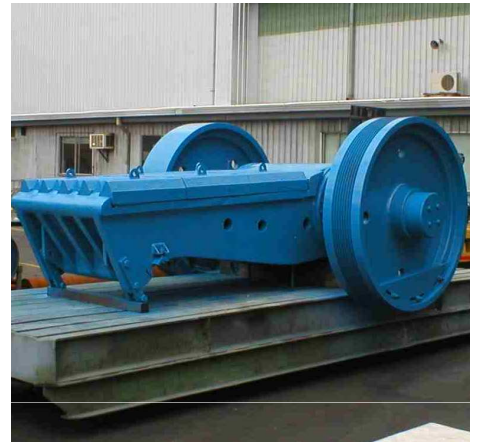
A.B.N 74 380 411 420
A.C.N 008 802 211
3 ALICE STREET,
BASSENDEAN, PERTH,
WESTERN AUSTRALIA 6054

Telephone: +61 8 9279 5522
Facsimile: +61 8 9279 9386
Internet: www.hofmann.net.au
Email: mail@hofmann.net.au



CRUSHER OVERHAULS

Hofmann Engineering provides a complete Factory Crusher Rebuild Service. Rebuilds to "as new" condition with the offer of product improvements to increase reliability. We also carry out Onsite Repairs, Installations, Commissioning and Inspection Services during plant shutdowns.



GYRATORY CRUSHERS

PRIMARY•SECONDARY•TERTIARY

- ALLIS CHALMERS
- FULLER TRAYLOR
- JACQUES
- KAWASAKI
- METSO MINERALS
- KOBE
- NORDBERG
- SANDVIK
- SYMONS

JAW CRUSHERS

- ALLIS CHALMERS
- JACQUES
- THYSSEN KRUPP
- KUE KEN
- METSO MINERALS
- NORDBERG
- WESSERHUTTE



ROLLS CRUSHERS

WE CAN PROVIDE:

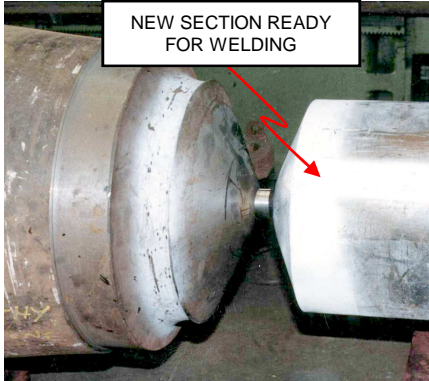
- Hard faced rolls.
- White iron tyres.
- Segmented NI hard tyres.
- High Pressure Grinding Rolls (HPGR) for:
 - FFE MINERALS
 - KHD
 - KOPPERNS
 - POLYSIUS

**IMPACT CRUSHERS
& SPECIALS**

- Hofmann Impact Crusher.
- Hofmann Mobile Crusher.

CRACKED & WORN MAIN SHAFT REPAIRS

Hofmann Engineering can weld repair Crusher Main Shafts that OEM's consider irreparable or where a replacement is not readily available. Hofmann Engineering can manufacture new shafts to suit all types and makes of crushers.



NEW SECTION READY FOR WELDING



Position of Weld repaired crack.

WELD PREPARATION

- Crack machined out.
- Weld prep machined to generate alignment datums and to suit the sub arc process.

WELDING MANAGEMENT

- We have in-house welding metallurgists to develop weld procedures for these demanding & challenging jobs.
- Submerged arc welding.

POST HEAT TREATMENT

On completion of welding, the entire shaft is stress relieved in a purpose built oven that allows the shaft to be rotating throughout the process.

COMPONENT REBUILDS: LOCKING & ADJUSTMENT RINGS, HEADS & BOWLS



WELDING

All weld repairs are monitored throughout the process. This enables Hofmann Engineering to fully back challenging repairs such as cracked or broken adjustment rings.



MACHINING

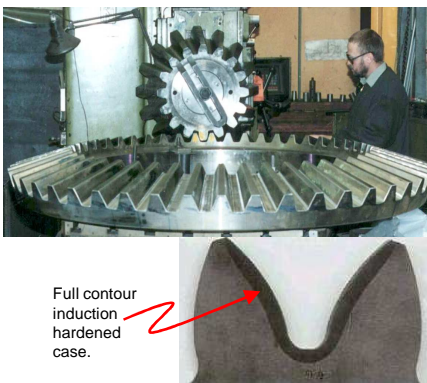
All items are finish machined to OEM specifications. Threads are machined using a 5-axis vertical borer to ensure pitching accuracy.



ASSEMBLY

Components can be partially or fully assembled to reduce downtime during component change outs.

WORKSHOP & SITE SERVICES PROVIDING MINESITES WITH THE COMPLETE PACKAGE



Full contour induction hardened case.

SUPPLY OF BEVEL GEARS

- Supplied to AGMA 10 quality, either;
- Quench & tempered to 360 BHN.
- Induction Hardened to 56 HRC.
- Case Carburised to 60 HRC.



SPECIAL REQUIREMENTS

Hofmann Engineering will develop & manufacture Special Crushers to meet your specific product or customise your existing equipment to suit your specific needs.



SITE & BREAKDOWN SERVICE

Experienced Site Services team for installation, site inspections and commissioning for planned or unforeseen shut downs.