

## SLEW BEARINGS

NEW  
REPAIRED  
ALL MODELS  
TO 16M DIA

*Since 1969 Hofmann Engineering has provided specialist engineering services to Australia's industry leaders.*

*Quality Assurance accreditation by Bureau Veritas complements our total quality culture.*

*Our commitment to continuous quality-improvement touches every aspect of our products, services and customer support.*

### HOFMANN ENGINEERING PTY LTD

A.B.N 74 380 411 420  
A.C.N 008 802 211  
3 ALICE STREET,  
BASSENDEAN, PERTH,  
WESTERN AUSTRALIA 6054

Telephone: +61 8 9279 5522  
Facsimile: +61 8 9279 9386  
Internet: www.hofmann.net.au  
Email: mail@hofmann.net.au



## SLEW BEARINGS AND SLEW GEARS

Designed to meet your requirements, manufactured from your drawings or reproduced from your samples. The Hofmann Engineering Team will design your Slew Bearings using the latest design software and Computer Aided Drafting to DIN, AGMA, British or Australian Standards.

Hofmann Engineering is unique. We have a complete design manufacturing and testing facility for Slew Bearings in house. This ensures the fastest possible delivery time and guarantees the quality of our final product. Each stage of manufacture is monitored through our Accredited ISO 9001 Quality Assurance system.

Induction Hardening of bearing surfaces of the Slew Bearing, and/or the gear teeth, is carried out using the latest technology. We have more than 20 years experience in Surface Hardening.

Each Slew Bearing is supplied with full certification covering Material, Heat Treatment and Dimensional Checks. Hofmann Engineering's experience in this field extends to over 100 complete slew bearings of various types.

On Site Inspection, Consultancy, Machining and Installation are also available.

**Both New and Repaired Replacement Slew Bearings and Slew Gears To Suit the Following:**



### RECLAIMER/STACKER/ CRANE SLEW BEARINGS

- KRUPP
- VOEST ALPINE
- O&K
- MITSUBISHI
- FAVCO

### HYDRAULIC EXCAVATOR SLEW BEARINGS

- CAT
- KOMATSU
- LIEBHERR
- O&K
- DEMAG



### DRAGLINE/SHOVEL SLEW BEARINGS

- BUCYRUS
- MARION
- P&H
- PAGE



# FROM OLD...

Our experience with Slew Bearings is second to none, and we are able to deliver the finished article on time, to precise parameters.



## DESIGN & DRAWING

Our team of highly trained Engineers will prepare plans from your existing Slew Bearings or new designs can be made to fit your requirements.



## VERTICAL BORING

A range of Vertical Boring machines for turning of Slew Bearing Rings up to 16 metres in diameter.



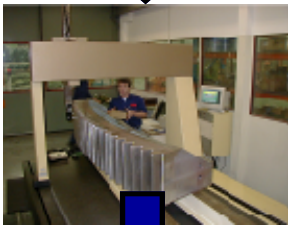
## GEAR CUTTING

External and Internal Gear Cutting on our extensive range of CNC and Conventional gear cutting machines.



## INDUCTION HARDENING

In addition to induction hardened bearing raceways we also offer tooth by tooth full contour induction hardened gear teeth. This process produces a hard wear resistant case up to 10mm deep, supported by a tough impact resistant core.



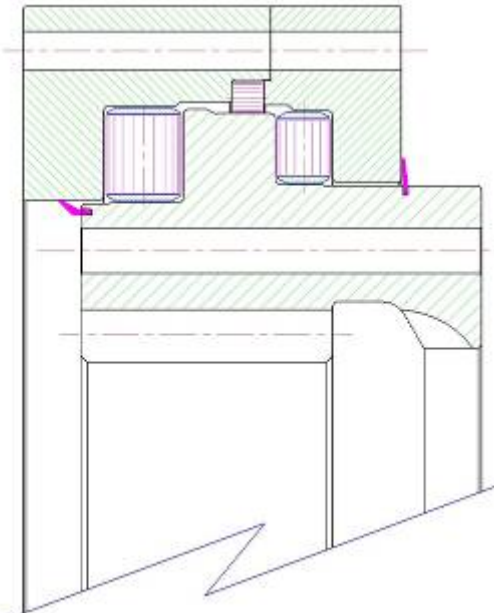
## INSPECTION LABORATORY

Co-ordinate measuring machine with lead involute and pitch software to enable the complete inspection of components in a climate controlled laboratory environment.



## ASSEMBLY

All slew bearings are trial assembled prior to despatch.

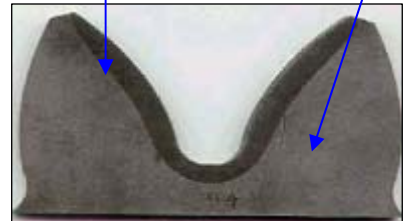


### Hard Wear Resistant Case:

Max Case hardness = 58 HRC  
Max Case depth = 10 mm  
Max residual compressive stress depth = 10mm

### Tough Impact Resistant Core:

Core hardness = 300BHN



Sectioned test piece showing the induction hardened profile



Computerised full contour induction hardening of large Slew Gears and Bearing Race Ways

# ... TO NEW

