

HOFMANN UPGRADED PLANETARY TRANSMISSIONS

New or Service Exchange. Gain more life from your transmissions

**HOFMANN
ENGINEERING**

SHOVEL PLANETARY GEARBOXES

P&H 2800XPA

P&H 2800XPB

P&H 4100A

P&H 4100XPB

BUCYRUS 495B

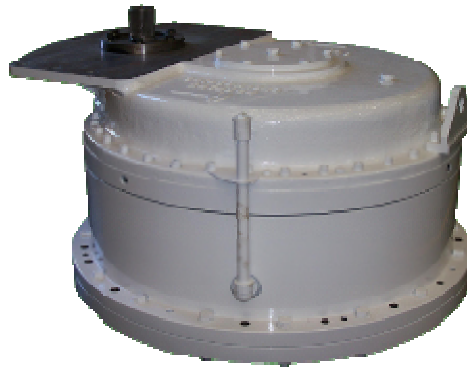
BUCYRUS 495HR

PROPEL & SWING

Since 1969 Hofmann Engineering has provided specialist engineering services to Australia's industry leaders.

Quality Assurance accreditation by Bureau Veritas complements our total quality culture.

Our commitment to continuous quality-improvement touches every aspect of our products, services and customer support.

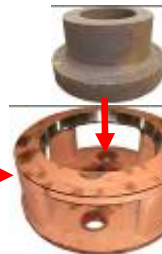


4. Second and third stage ring gears are through hardened and accurately cut to AGMA 10 quality



3rd Reduction Ring Gear

5. 43Tooth output spline is upgraded to 47Tooth spline for higher load carrying capacity.

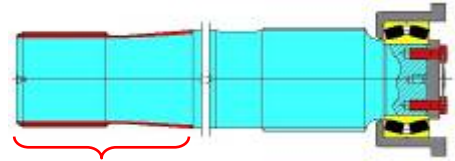


P&H: SWING AND PROPEL TRANSMISSION UPGRADES:

1. Second reduction sun pinion eccentric thrust kit to reduce wear and prevent damage to pinion.



2. Induction hardened 43Tooth propel shaft to 54-56HRC to give substantial fatigue cracking resistance.



3. 43Tooth output spline is upgraded to 47Tooth spline for higher load carrying capacity.

SERVICE EXCHANGE PROGRAM:

1. Full strip and assessment.
2. Replacement of bearings and seals.
3. NDT inspection of all components.
4. "Failed Steel" repair/replacement.
5. Reassembly and test run.
6. Comprehensive service reports.

BUCYRUS:

HOIST, SWING AND PROPEL TRANSMISSIONS NEW, REFURBISHED AND UPGRADED:

1. Higher quality materials and heat treatment to increase load carrying capacity.
2. SKF bearings for superior quality and life.
3. Form ground gearing to AGMA 12 minimum quality.
4. Higher quality materials and SKF bearings for output pinions.



495HR Swing Transmission

495HR Hoist Transmission

495HR Propel Transmission





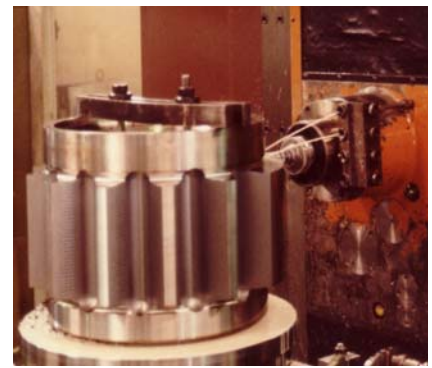
HOIST & CROWD GEAR BOXES

- Hoist, Swing, Crowd and Propel.
- Overhauled & New.
- Like For Like Replacement Internal Gearing or Upgraded to match today's technology of Case hardening by Carburising or induction hardening.
- Full AGMA Quality Inspection carried out on all Gearing.



DIPPER RACKING

- **Cast Manganese Steel** through hardened.
- **Cast Alloy Steel** through hardened .
- **Forged alloy steel** with machined tooth profile through hardened 320-360BHN. Guarantee pitch and accuracy.



CROWD PINIONS & RACKS.

- Forged steel machined, heat treated
- Precision machining of teeth.
- Full range for all makes and models.
- **Dipper Racks** Cast Alloy or Manganese Steel as per OEM. Hofmann Improved Forged Alloy Steel with machined tooth profile.



ROPE SHEAVES.

- New Forge fabricated design.
- Rebuilt by submerged arc welding.
- Re-profiling to original dimensions.
- Full Contour Induction Hardening to 54-56HRc.



BOOM REBUILDS.

- Striped, Assessed & Evaluated.
- Repaired to remove all cracking.
- Fully stress relieved.
- Finish machined in single setup.



DIPPER AND DIPPER ARM

- Full or partial Rebuilds.
- NDT Inspection & Repairs.
- Onsite line Boring & Welding with the Hofmann Line Boring Machine.
- Pins, Bushes & Link replacements.
- **Latch bars & Latch Levers.** Full range for all makes and models.



PINS AND BUSHES

- **PINS** deep case Induction Hardened and precision ground.
- **Bushes** Designed and manufacture to suit your field requirements.
- Selections of Materials, Heat Treatment, Lubrication groove design & Coatings.



SPLINE & SHIPPER SHAFTS REPLACEMENT GEARS

- Replaced With New Or Weld Repaired. Replacement gears and components for all areas of your shovel.



TRACK PADS

- **Manganese Steel** Up To 18%
- **Alloy Steel** quench and tempered
- **Induction Hardened Alloy Steel** quench & tempered and then deep case Induction Hardened on running path and in the track connecting bores.