

SHOVEL

**REPLACEMENT
PARTS**

**BUCYRUS
MARION
P&H
PAGE**



Since 1969 Hofmann Engineering has provided specialist engineering services to Australia's industry leaders.

Quality Assurance accreditation by Bureau Veritas complements our total quality culture.

Our commitment to continuous quality-improvement touches every aspect of our products, services and customer support.

HOFMANN ENGINEERING PTY LTD

A.B.N 74 380 411 420
A.C.N 008 802 211
3 ALICE STREET,
BASSENDEAN, PERTH,
WESTERN AUSTRALIA 6054

Telephone: +61 8 9279 5522
Facsimile: +61 8 9279 9386
Internet: www.hofmann.net.au
Email: mail@hofmann.net.au



SWING PINIONS

- **Pinion Shaft Quenched & Tempered**
- **Induction Hardened** Gear teeth & Splines before finally shot peening the stressed shaft area. The F.E.A. performed on this re-design confirms a 50 x life improvement.
- **Pinion** can also be supplied fully assembled with Bearing & Cartridge ready to install.

HOIST GEARBOX PINIONS

- **Forged alloy steel**
- **Case Carburised** Pinion, 58-62HRC, precision ground to AGMA 12.
- As per above examples of P&H 4100A Hoist Input Pinion, and Bucyrus495 Hoist Intermediate Pinion.



HOIST ROPE DRUMS

- **New Forge Fabricated** alloy steel rope drum, Induction hardened 56-58HRC.
- **Induction hardened** drum seal.
- **New Forged Alloy Steel Drum Shafts** through hardened.
- **Service Exchange** and re-lagging available.

HOIST DRUM GEARS

- **New Forge Fabricated** Drum Gear 330-360BHN core hardness.
- One piece T-section construction.
- **Full Contour Induction hardened** gear teeth to 54-58HRC and precision ground to AGMA 10 quality.

the solution to split line tooth cracking

**SHOVEL
SWING
GEARS
&
PINION
SHAFT
ASSEMBLIES**

**P&H
MARION
BUCYRUS**

Since 1969 Hofmann Engineering has provided specialist engineering services to Australia's industry leaders.

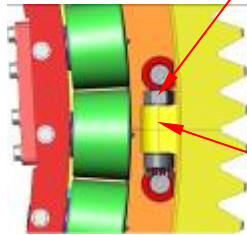
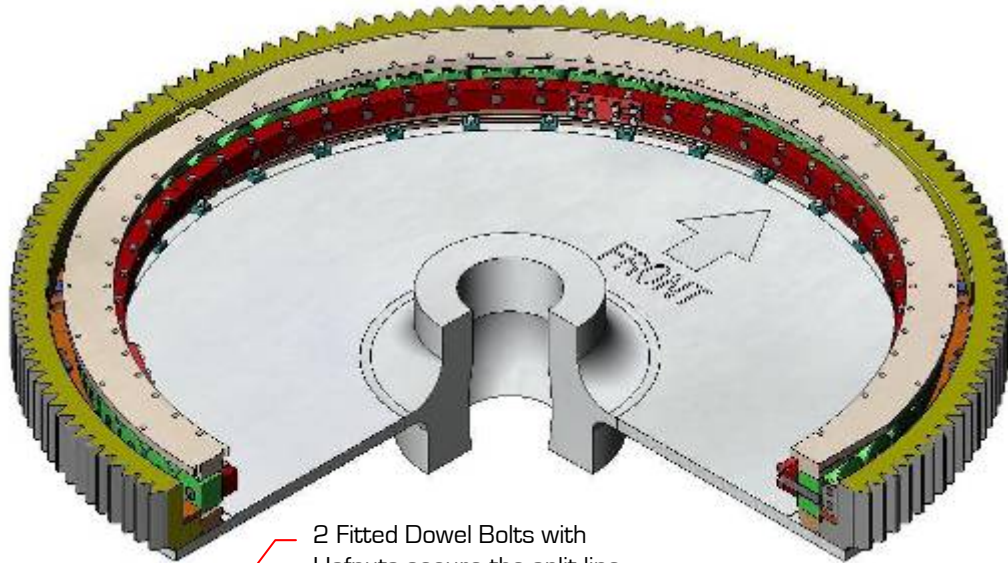
Quality Assurance accreditation by Bureau Veritas complements our total quality culture.

Our commitment to continuous quality-improvement touches every aspect of our products, services and customer support.

HOFMANN ENGINEERING PTY LTD

A.B.N 74 380 411 420
A.C.N 008 802 211
3 ALICE STREET,
BASSENDEAN, PERTH,
WESTERN AUSTRALIA 6054

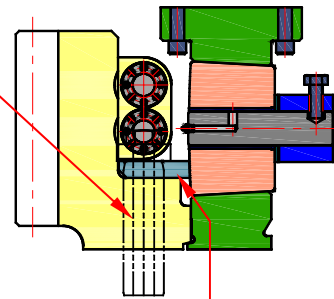
Telephone: +61 8 9279 5522
Facsimile: +61 8 9279 9386
Internet: www.hofmann.net.au
Email: mail@hofmann.net.au



2 Fitted Dowel Bolts with Hofnuts secure the split line with 190T of clamping force.

Fitted bolting sleeve also helps retain the split joint.

Tapered joint face and Hofnuts prevent tangential separation force and hence fatigue cracking



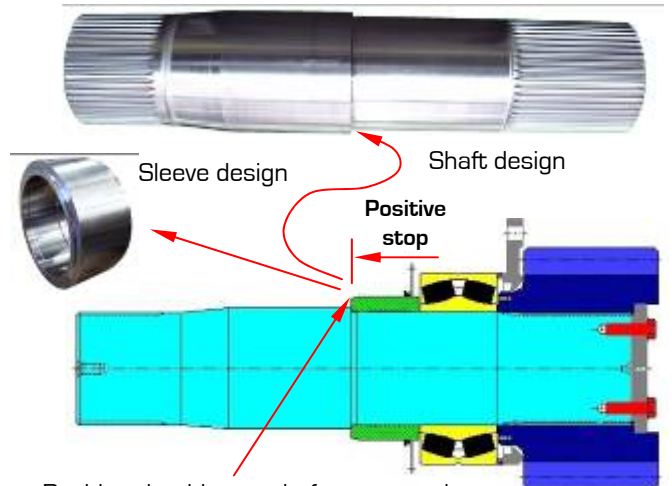
Replaceable Thrust Rail

SPLIT SWING GEAR ADVANTAGES:

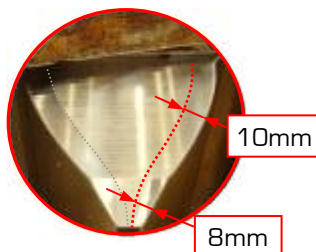
- Shovel only need be separated not de-decked
- Replaceable thrust rail
- Universal bolt pattern
- Stronger, harder teeth

SWING SHAFT ASSEMBLIES

Improve the life of your Swing Shafts with Hofmann Engineering Pty Ltd positive stop shoulder design that prevents the sleeve moving during thermal expansion thus eliminating loss in bearing preload.



Positive shoulder on shaft prevents the bearing sleeve moving during operation thus bearing preload is maintained



FULL CONTOUR INDUCTION HARDENING

along full involute without tempering back the tooth tip. The effective case depth is varied from 8mm at the tooth tip to 10mm to eliminate a hard brittle tooth tip.