

SUGAR MILLS

PARTS AND SERVICE

Since 1969 Hofmann Engineering has provided specialist engineering services to Australia's industry leaders.

Quality Assurance accreditation by Bureau Veritas complements our total quality culture.

Our commitment to continuous quality-improvement touches every aspect of our products, services and customer support.

HOFMANN ENGINEERING PTY LTD

A.B.N 74 380 411 420
A.C.N 008 802 211
3 ALICE STREET,
BASSENDEAN, PERTH,
WESTERN AUSTRALIA 6054

Telephone: +61 8 9279 5522
Facsimile: +61 8 9279 9386
Internet: www.hofmann.net.au
Email: mail@hofmann.net.au



Hofmann Engineering has the experience and technology to provide you with all of your sugar mill drive train needs. High & low speed gearing, shafts, lubrication and sealing solutions, crush roll pinions, planetary drives, consulting, onsite service and more.



LOW SPEED PINIONS

- Through hardened (to 360 BHN).
- Induction hardened (to 55 HRC).
- Case-carburised (to 62 HRC).
- HofCarb carburised (to 62 HRC).

CAPACITY

- Size: 1.6 m face x 2.0m dia.
- Quality: AGMA 12 (DIN 5).



LOW SPEED GEARING

- SG Iron.
- Cast Steel (to 320 BHN).
- Austempered SG Iron (to 450 BHN).
- Forged fabricated (to 360 BHN).
- Forged fabricated induction hardened (to 55 HRC).

CAPACITY

- Size: 1.6 m face x 15 m dia.
- Quality: AGMA 10 (DIN 7).

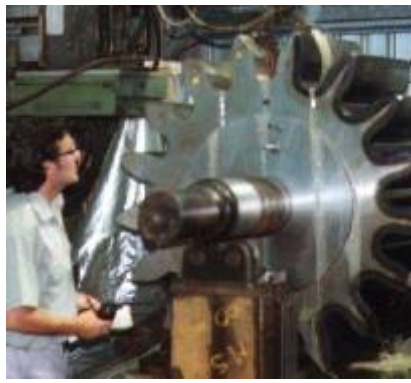
RE-RIMMED GEARS

- Remove old rim and weld new rim to hub with full penetration welding.



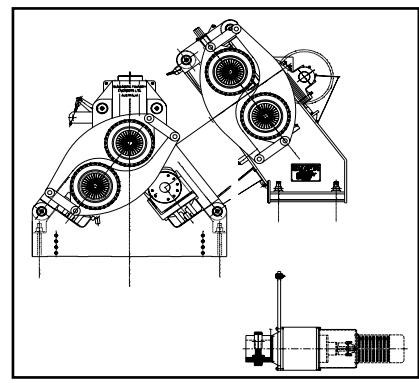
HIGH SPEED GEARBOXES

- Replacement gearing and new gearboxes.
- Ratio changes and power upgrades.
- Case-carburised to 62 HRC and precision ground to AGMA 12 (DIN 5).
- White metal bearing manufacturing and reconditioning.



CRUSH ROLL PINIONS

Cast to 300 BHN.
Forged to 300 BHN and CNC cut to AGMA 6 quality. Eliminates casting inclusions that can cause fatigue fracture.
Induction hardened to 55 HRC and CNC hard cut to AGMA 6 gives 200% improvement in pitting and 70% improvement in bending strength.



CRUSH ROLL PLANETARY

Planetary drives, use electric motors and eliminate crush roll pinions while still allowing centre distance adjustment
Precision gears, case hardened and ground to AGMA 12 quality.
 Standard modular design minimises spare parts capital and can be changed out in less than one shift.



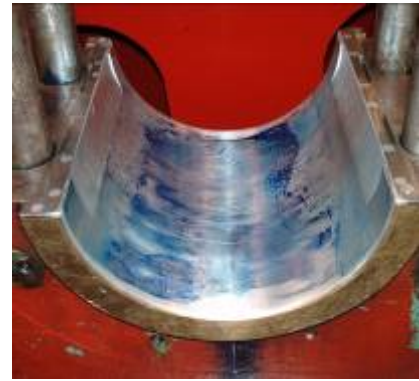
GEARBOX SPECIALS

- Special** Gearboxes can be designed to fit existing foundations as a direct replacement of your old drive. (Flender, Falk, Valmet, David Brown etc.)
- Power upgrades, ratio changes and replacement parts available.
 - Torque-splitting gear drives.



LUBRICANT SUPPLY

Hofmann Lubrication division has an agreement with Klüber Lubrication of Germany AG to supply a range of products, directly formulated to **Protect** the Gearing that we design and manufacture.
 This forms an integral part of our **Gear Protection Package**.



LOW SPEED JOURNAL BEARINGS

- White metal
- Bronze
- Pedestals and caps
- High tensile studs and nuts
- Full reconditioning and installation available.



GEAR RE-RIMMING

- Old gear material tested to ensure material compatibility
- Rim machined off leaving bare diaphragm.
- New forged rim welded to diaphragm by submerged arc full penetration welding.
- Full contour induction hardening to 55 HRC and hard cutting to AGMA 10
- Full NDT to ensure integrity.



ONSITE INSPECTION & CONSULTING SERVICE

- Inspection and assessment of your mill and drive train.
- Failure analysis including Engineering and Gearing design review. Finite Element Analysis and Metallurgical Analysis.



ONSITE SERVICE

- Laser alignment of gear trains.
- Gear and pinion installation.
- Reconditioning of worn gearing using Hofmann Engineering's reconditioning procedure.
- White metal and bronze bearing installation including scraping.