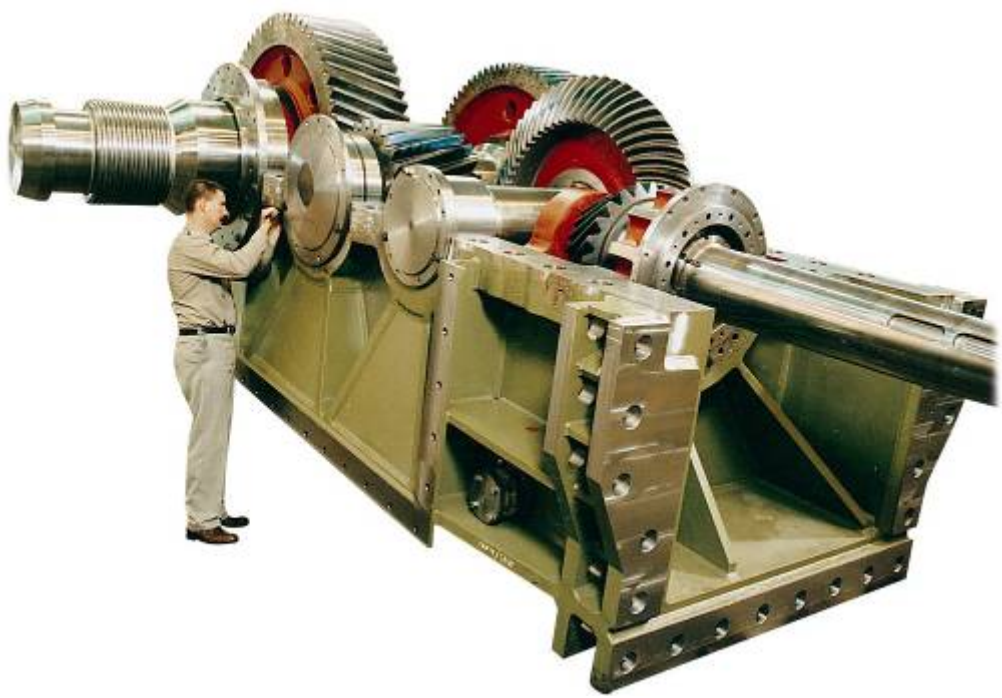


**GEARBOX  
RANGE**

**STANDARD  
RANGE**

**SPECIALS**



**COAL CRUSHING GEARBOXES**



**CONVEYOR GEARBOXES**



**CMM INSPECTION**



**SHAFT MOUNTED  
ALIGNMENT FREE GEARBOXES**



**DOUBLE OUTPUT  
EXTRUDER GEARBOX**



**SELF ALIGNING, TWIN PINION  
MILL DRIVE GEARBOX**

*Since 1969 Hofmann Engineering has provided specialist engineering services to Australia's industry leaders.*

*Quality Assurance accreditation by Bureau Veritas complements our total quality culture.*

*Our commitment to continuous quality-improvement touches every aspect of our products, services and customer support.*

**HOFMANN ENGINEERING PTY LTD**

A.B.N 74 380 411 420  
A.C.N 008 802 211  
3 ALICE STREET,  
BASSENDEAN, PERTH,  
WESTERN AUSTRALIA 6054

Telephone: +61 8 9279 5522  
Facsimile: +61 8 9279 9386  
Internet: [www.hofmann.net.au](http://www.hofmann.net.au)  
Email: [mail@hofmann.net.au](mailto:mail@hofmann.net.au)





### SELF ALIGNING DRIVES

- Automatically maintains 100% gear contact regardless of movement in foundations and/or driven component.
- Can use recirculating filtered oil.
- Reduced maintenance as alignment checks and adjustments are eliminated.
- Power to 10,000kW per gearbox.



### GEARBOXES STANDARD

- Completely designed and manufactured in house using AGMA and DIN standards.
- **Standard** range of multi stage drives.
- Precision case carburised and ground gearing to AGMA 14 for quiet reliable operation.



### GEARBOXES SPECIALS

- **Special** Gearboxes can be designed to fit existing foundation as a direct replacement of your old drive. (Flender, Falk, Valmet etc.)
- Power upgrades, ratio changes and replacement parts available.
- Torque splitting gear drives.



### INCHING DRIVES

Hofmann Engineering makes a range of inching drives to fit to new and existing mill and kiln drives. Features include:

- Planetary main reduction.
- Hydraulic or electric.
- Integral or separate brakes.
- Disengaging couplings.



### BOGIE DRIVES

- Complete motor, gearbox, coupling assemblies for bogie wheel drives.
- Spiral bevel gear input. These drives are shaft mounted alignment free.



### PLANETARY HIGH SPEED

Planetary gearboxes for compact drive solutions. Case carburised gears, precision ground to ensure equal load sharing. Carbo-nitrided Internal ring gears. All gearing can be precision ground to DIN 3 (AGMA 15) to ensure quiet, smooth operation.



### CONVEYOR DRIVE 3000KW

Conveyor drive gearboxes, shaft mounted or floor mounted. Case carburised and ground gears. S.G. Iron Housings or Fabricated from Mild Steel. Supplied complete with cooling systems and condition monitoring if required.



### CENTRIFUGE GEARBOX .

Special purpose gearboxes designed and manufactured to meet the customer's specification. This free floating, inline drive replaces a complex and expensive planetary gearbox.



### HIGH SPEED GEARBOXES

High speed drives, speed increasing and speed decreasing, with white metal bearings where appropriate. Gears ground to very high accuracy levels ( DIN 3). Units to 50,000 kW and 20,000 RPM input speed have been manufactured.