

**HOFMANN  
ENGINEERING**

**MILLS  
&  
KILNS**

*Since 1969 Hofmann Engineering has provided specialist engineering services to Australia's industry leaders.*

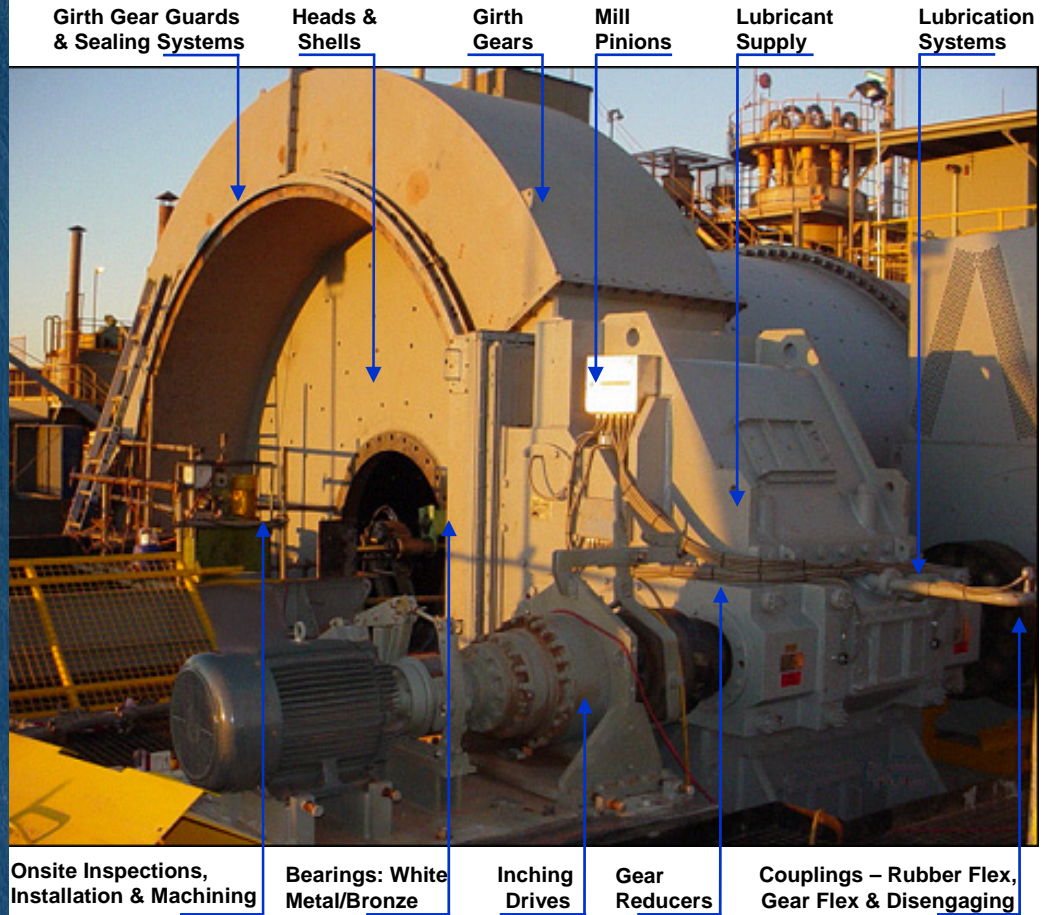
*Quality Assurance accreditation by Bureau Veritas complements our total quality culture.*

*Our commitment to continuous quality-improvement touches every aspect of our products, services and customer support.*

**HOFMANN ENGINEERING PTY LTD**

A.B.N 74 380 411 420  
A.C.N 008 802 211  
3 ALICE STREET,  
BASSENDEAN, PERTH,  
WESTERN AUSTRALIA 6054

Telephone: +61 8 9279 5522  
Facsimile: +61 8 9279 9386  
Internet: www.hofmann.net.au  
Email: mail@hofmann.net.au



**PINIONS**

- 1 Through-Hardened.
- 2 Induction-Hardened.
- 3 Case-Carburised.
- 4 HofCarb Carburised.
- 5 Self-Aligning.

**CAPACITY**

- Size - 1.6m face x 6m lg.
- Hardness - to 62 HRC
- Quality - AGMA13 (DIN 5)



**GIRTH GEARS**

- 1 SG Iron.
- 2 Cast Steel.
- 3 Austempered SG Iron.
- 4 Forged Fabricated.
- 5 Forged Fabricated Induction Hardened.

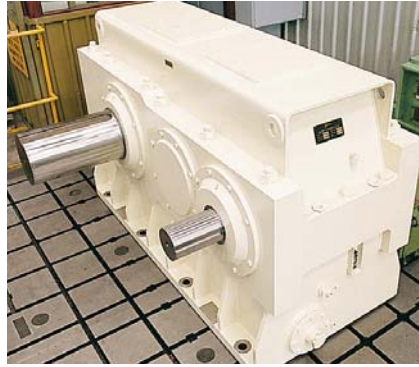
**CAPACITY 15m ( 50ft)**

- Size - 2.5m face x 15m dia.
- Hardness - to 52HRC (500BHN).
- Quality - AGMA 10 (DIN 7).



### SELF-ALIGNING DRIVES

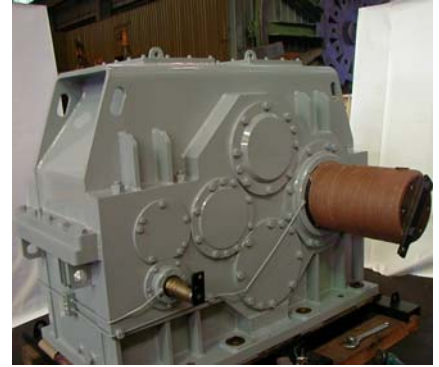
- Automatically maintains 100% gear contact regardless of movement in foundations and/or driven component.
- Can use recirculating filtered oil.
- Reduced maintenance as alignment checks and adjustments are eliminated.
- Power to 10 000kW per gearbox.



### GEARBOXES STANDARD

Completely designed and manufactured in house using AGMA and DIN standards.

- **Standard** range of multi-stage drives.
- Precision Case-carburised and ground gearing to AGMA 14 for quiet reliable operation.



### GEARBOXES SPECIALS

**Special** Gearboxes can be designed to fit existing foundation as a direct replacement of your old drive. (Flender, Falk, Valmet etc.)

- Power upgrades, ratio changes and replacement parts available.
- Torque-splitting gear drives.



### INCHING DRIVES

Hofmann Engineering makes a range of inching drives to fit to new and existing mill and kiln drives. Features include:

- Planetary main reduction.
- Hydraulic or electric.
- Integral or separate brakes.
- Disengaging couplings.



### GEAR PROTECTION SYSTEMS

- Continuous & intermittent grease spray systems.
- Re-circulating filtered oil systems.
- Infrared temperature monitoring systems.
- **Measures gear mesh temperature.**
- Sealing systems for girth gears and trunnion bearings.



### LUBRICANT SUPPLY

Hofmann Lubrication division has an agreement with Klüber Lubrication Germany AG to supply a range of products, directly formulated to **Protect** the Gearing that we design and manufacture.

This forms an integral part of our **Gear Protection Package** used to improve the life of high performance gearing.



### ONSITE MACHINING

- Flange and Journal machining to 14m dia.
- Line boring and drilling to 3m dia x 6m L.
- Grinding and finishing of kiln tyres.
- Milling of keyways and surfaces.
- Welding and heat-treatment.
- Bolt tensioning.
- Special purpose machinery design and manufacture to suit your application.



### ONSITE INSPECTION & CONSULTING SERVICE .

- Inspection and assessment of your mill and drive train.
- Failure analysis including Engineering and Gearing design review. Finite Element Analysis and Metallurgical Analysis.



### ONSITE SERVICE

- Laser alignments of drive trains.
- Girth gear/pinion installation.
- Reconditioning of worn gearing using case hardened pinions and chemical etchant.
- Trunnion bearing installation including scraping in of white metal bearings.